



NeSD

National eService Dashboard

National Informatics Centre

Department of Electronics & Information Technology

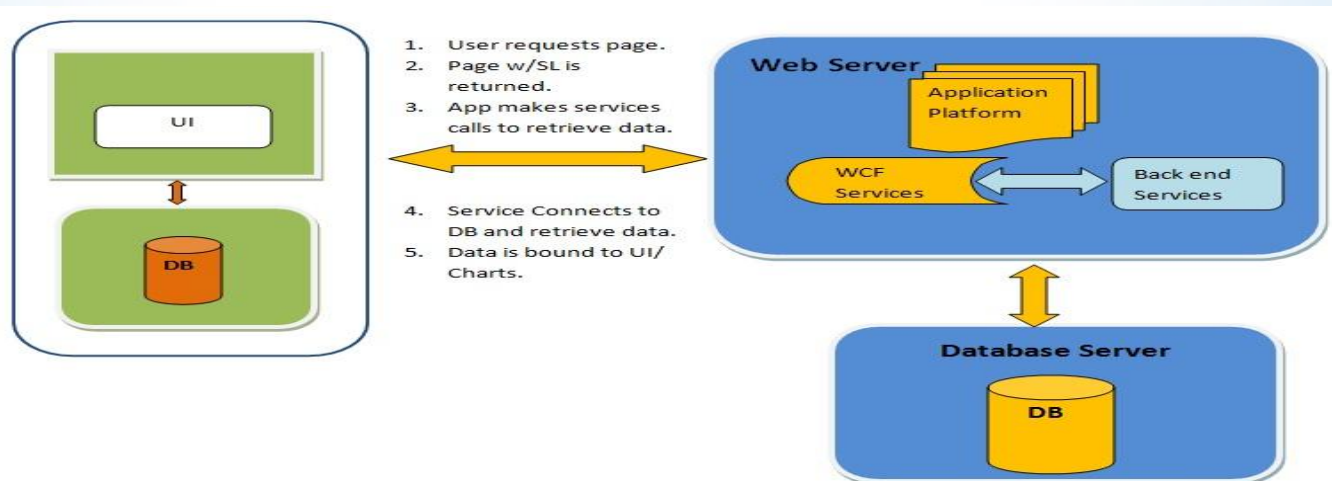
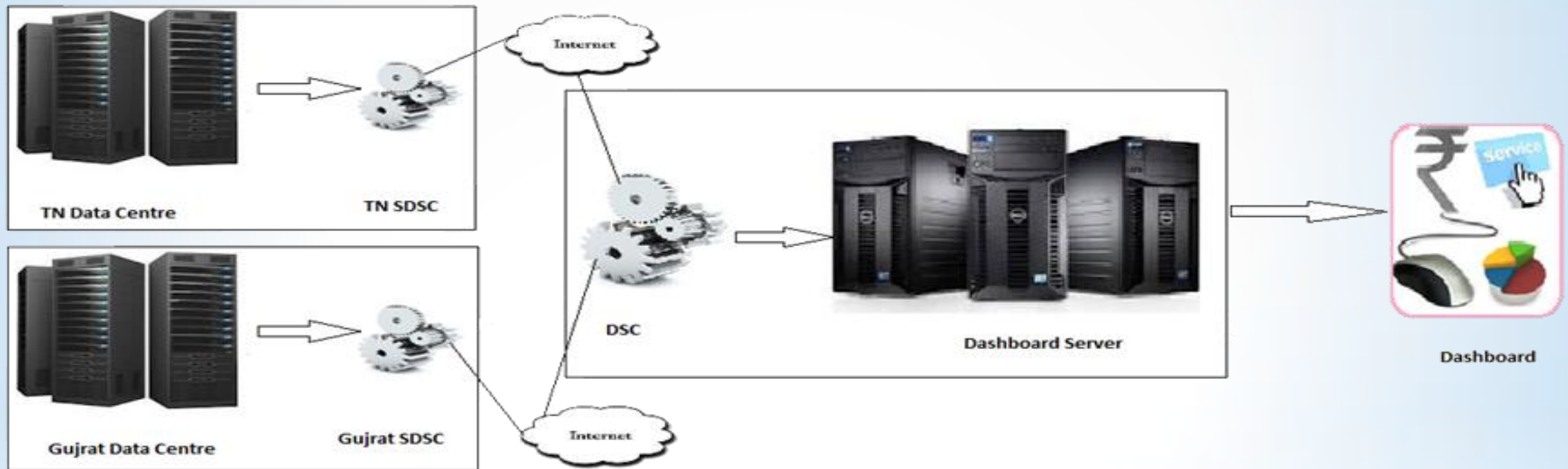
Ministry of Communications & Information Technology



NeSD - Overview

- A tool for dissemination of transaction statistics of central and state level e-Governance Projects
- Receives transaction statistics from web based applications periodically on near real time basis
- Presents quick analysis of transaction counts in graphical form and as tabular statements

NeSD Architecture



NeSD - Features

- Collects transaction counts using web services
- Dashboard Server Connector (DSC) runs as a service on Central Server and act as watchdog to acquire the data from 'Service Delivery Server' of various state and center
- Service Delivery Server Connector runs on the Servers of the State and Centre, whose data is required to be reflected in dashboard ; it can be any environment running a web service

NeSD - Analytical Reports

- Services-wise transaction figures
- State-wise Reports
- Central Project wise Reports
- Period-wise Reports for any day, month, etc.
- Drill down options
- Presented as Charts - Bar / Pie / Bubble, etc.
- Tabular statements



NeSD - Benefits

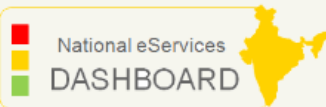
- Provides visibility for the national level services of e-Governance Systems
- Presents status on utilization of various systems running at multiple locations



NeSD - A walkthrough

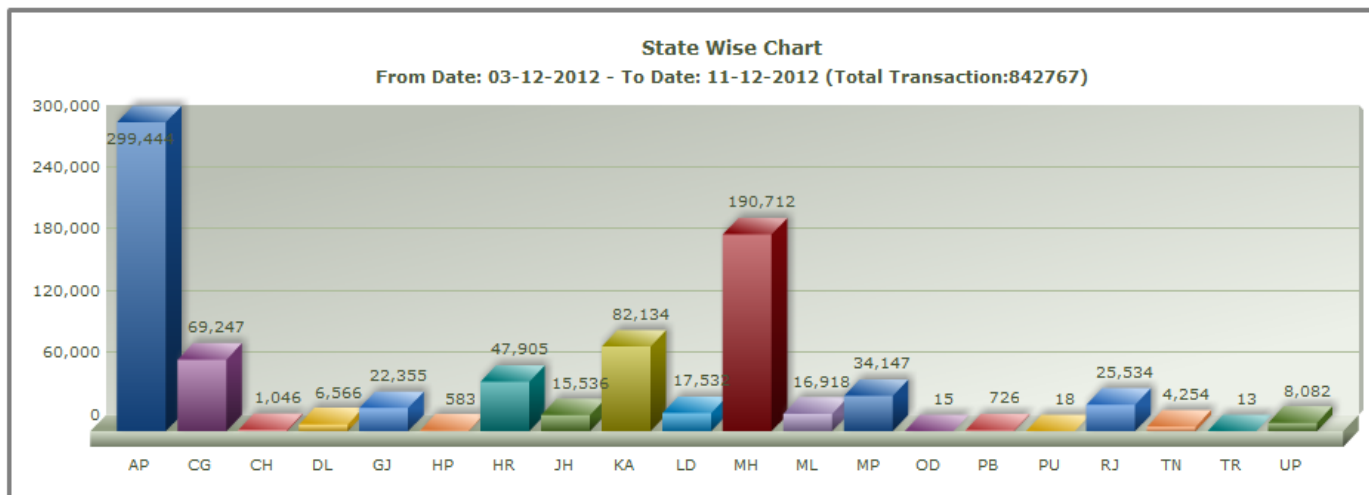
NeSD - Main Bar graph

[Home](#) [Analysis](#) [Ticker Chart](#) [Daily Transaction](#) [Report](#) [Logout](#)



Welcome: guest

[Central Wise Chart](#) [State Wise Chart](#) [Service Wise Chart](#) [Year Wise Chart](#)



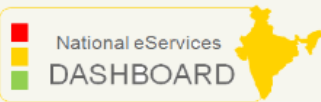
[Pie Chart](#) | [Tabular Data](#)

From Date:
(DD-MM-YYYY)

* TO Date:
(DD-MM-YYYY)

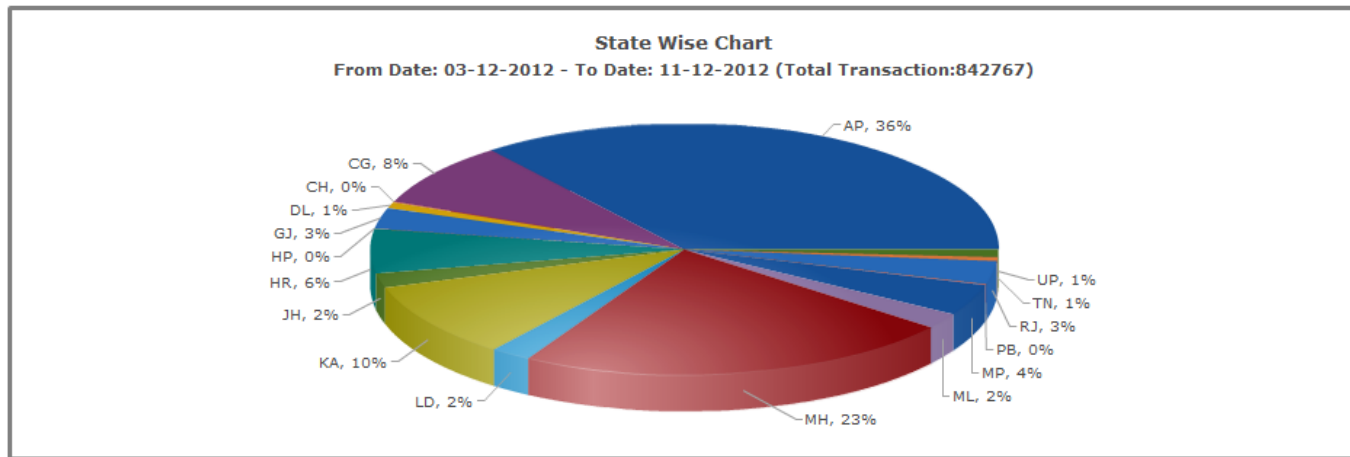
NeSD - 3D Pie Chart

[Home](#) [Analysis](#) [Ticker Chart](#) [Daily Transaction](#) [Report](#) [Logout](#)



Welcome: guest

[Central Wise Chart](#) [State Wise Chart](#) [Service Wise Chart](#) [Year Wise Chart](#)



[Column Chart](#) | [Tabular Data](#)

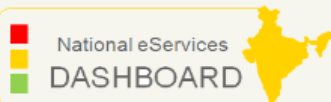
From Date
(DD-MM-YYYY)

* TO Date

(DD-MM-YYYY)

NeSD - Tabular Chart

[Home](#) [Analysis](#) [Ticker Chart](#) [Daily Transaction](#) [Report](#) [Logout](#)



Welcome: guest

[Central Wise Chart](#) [State Wise Chart](#) [Service Wise Chart](#) [Year Wise Chart](#)

Sl. No.	State Name	Total Transaction
1	Andhra Pradesh	299444
2	Chattisgarh	69247
3	Chandigarh	1046
4	Delhi	6566
5	Gujarat	22355
6	Himachal Pradesh	583
7	Haryana	47905
8	Jharkhand	15536
9	Karnataka	82134
10	Lakshadweep	17532
11	Maharashtra	190712
12	Meghalaya	16918
13	Madhya Pradesh	34147
14	Odisha	15
15	Punjab	726
16	Puducherry	18
17	Rajasthan	25534
18	Tamil Nadu	4254
19	Tripura	13
20	Uttar Pradesh	8082
	Total Transaction	842767

[Column Chart](#) | [Tabular Data](#)

From Date
(DD-MM-YYYY)

* TO Date
(DD-MM-YYYY)

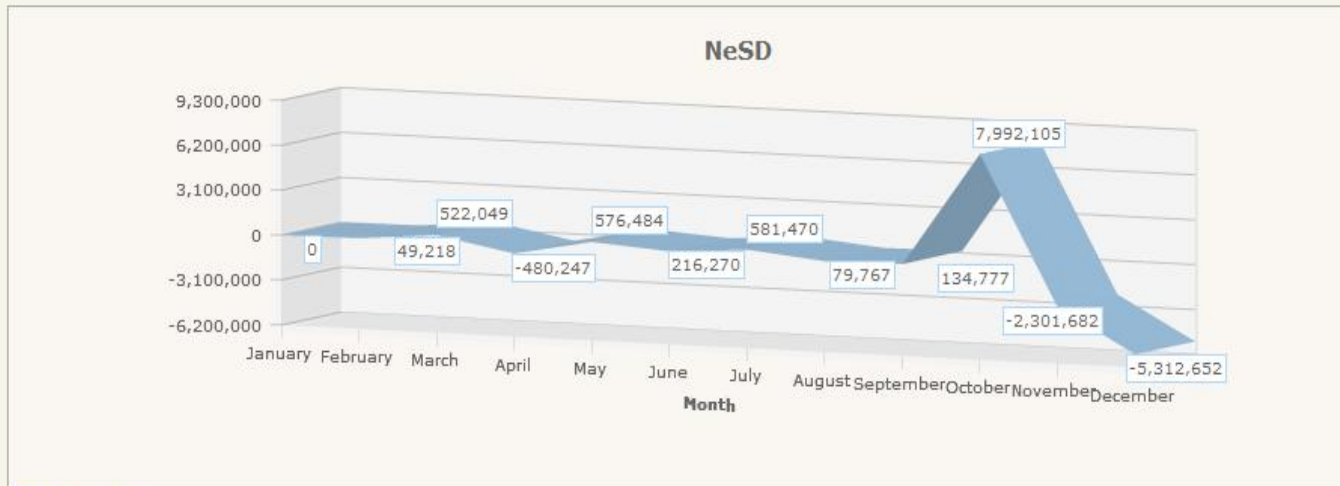
NeSD - 3D Line Graph Analysis

[Home](#) [Analysis](#) [Ticker Chart](#) [Daily Transaction](#) [Report](#) [Logout](#)



Welcome: guest

Year: 2012



[More Analysis](#)

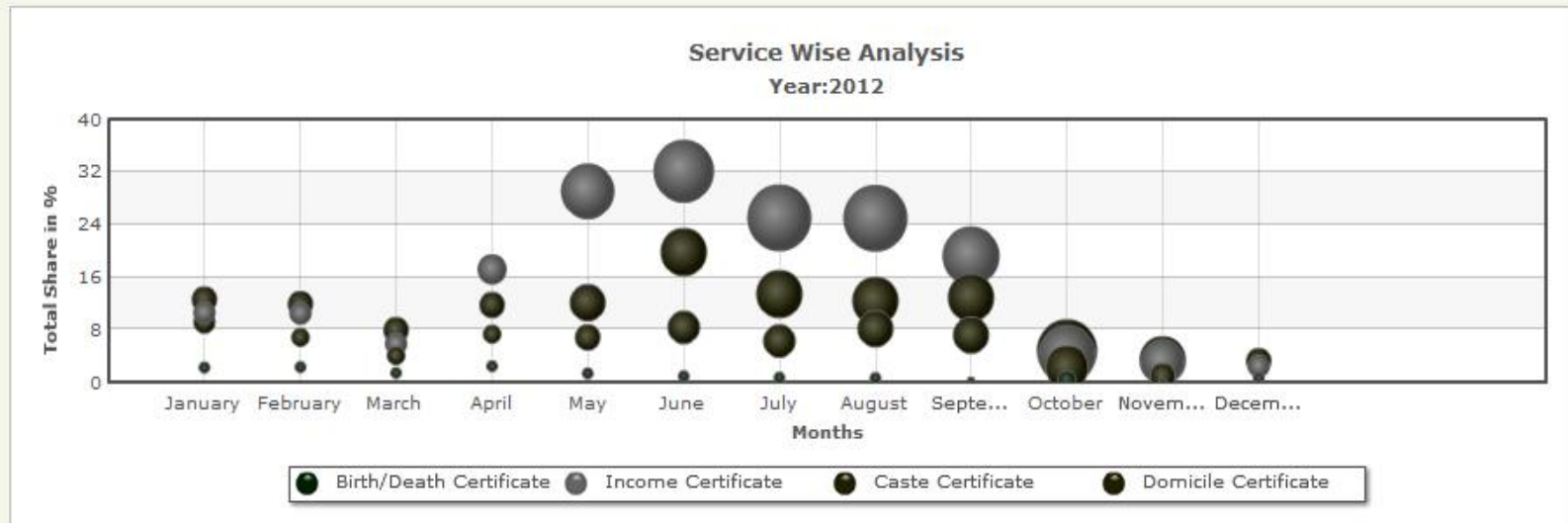
NeSD - Bubble Chart

[Home](#) [Analysis](#) [Ticker Chart](#) [Daily Transaction](#) [Report](#) [Logout](#)



Welcome: guest

Year: 2012 ▼



Thank You